



DIALAB[®]

More than 50 years of excellence

**PRODUCT
RANGE**

dialab.at



DIALAB

DIALAB

DIALAB

objekt
M55

DIALAB®



More than 50 Years of Experience

DIALAB® GmbH was founded in 1972.

The company with its headquarter located south of Vienna in Wiener Neudorf, Austria, is a manufacturer and distributor of Diagnostics and Laboratory Equipment.

We dedicate ourselves exclusively to supporting the clinical laboratory and supplying a complete range of products. Including five subsidiaries located in China, the Czech Republic, Hungary and Serbia we are a total of over 120 employees.

Active Around the Globe

We are engaged in business relations worldwide. Presently, DIALAB® supplies its wide product range to more than 100 countries around the world.

Quality

We maintain a quality management system certified according to ISO 13485:2016. The majority of products are CE marked according to Directive 98/79/EC or Regulation (EU) 2017/746 (class A).

OEM/Bulk

We offer different options for our OEM partners. Generally, DIALAB® can provide reagents in bulk, customised kits, labelled and unlabelled vials.

Product Training

We offer training programs in our headquarter in Wiener Neudorf in order to support our customers.

Customer Service, Orders and Pricing

Contact your DIALAB® Distributor or contact us directly at:

E-mail: office@dialab.at
Website: www.dialab.at
Phone: +43-2236-660910-0
Fax: +43-2236-660910-30/31

Warranty

DIALAB® shall warrant that products perform according to the procedures described in the instruction inserts/manuals accompanying the products. Changes or modifications of the products may adversely affect the stated performances. DIALAB® shall not be liable for any damages arising out of incorrect use of the products.









INDEX

CLINICAL CHEMISTRY	8
PROTEIN IMMUNOASSAYS	14
DIAQUICK RAPID TESTS	20
SEROLOGY	26
ELISA TESTS	30
BLOOD GROUPING & RHESUS TYPING	36
COAGULATION & FIBRINOLYSIS	40
HAEMATOLOGY	44
URINE STRIPS	50
INSTRUMENTS	54



CLINICAL CHEMISTRY



CLINICAL CHEMISTRY

Reagents



	Method	Configuration	CE
Adenosine Deaminase (ADA)	Enzymatic, colorimetric	2 reagents	✓
Albumin	BCG	Single reagent	✓
Alkaline Phosphatase	mod. IFCC	2 reagents	✓
Ammonia	Enzymatic, UV	Single reagent	✓
alpha-Amylase	CNP-G3	Single reagent	✓
alpha-Amylase	mod. IFCC	2 reagents	✓
alpha-Amylase Pancreatic	ET-G7PNP	2 reagents	✓
Bile Acids	Enzymatic cycling	2 reagents	✓
Bilirubin Auto Direct	DCA	2 reagents	✓
Bilirubin Auto Total	DCA	2 reagents	✓
Bilirubin Direct	Jendrassik Grof	2 reagents	✓
Bilirubin Total	Jendrassik Grof	2 reagents	✓
Calcium	Arsenazo	Single reagent	✓
Calcium	CPC	2 reagents	✓
Carbon Dioxide (CO₂)	PEP-C	Single reagent	✓
Chloride	Mercuric thiocyanate	Single reagent	✓
Cholesterol	CHOD-PAP	Single reagent	✓
Cholesterol HDL Direct	Enzymatic	2 reagents	✓
Cholesterol HDL Precipitant	Precipitation	Single reagent	✓
Cholesterol LDL Direct	Enzymatic	2 reagents	✓
Cholesterol LDL Precipitant	Precipitation	Single Reagent	✓
Cholinesterase	opt. DGKC	2 reagents	✓
CK-MB	opt. DGKC / IFCC	2 reagents	✓
CK-NAC	opt. DGKC / IFCC	2 reagents	✓
Copper	3,5-DiBr-PAESA	Single reagent	✓
Creatinine	mod. Jaffe	2 reagents	✓
Creatinine	Enzymatic, PAP	2 reagents	✓
Fructosamine	NBT	2 reagents	✓
G6PDH	UV, kinetic	2 reagents*	✓
G-Reagent**	for G6PDH, UV, kinetic	Single reagent	
gamma-GT	Szasz, stand. to IFCC	2 reagents	✓
GLDH	DGKC	2 reagents	✓
Glucose	GOD-PAP	Single reagent	✓
Glucose	Hexokinase	2 reagents	✓
GOT (AST)	mod. IFCC	2 reagents	✓
GPT (ALT)	mod. IFCC	2 reagents	✓

*powder

** general laboratory equipment

CLINICAL CHEMISTRY

Reagents



	Method	Configuration	CE
HbA1c Direct	Immunoturbidimetric	2 reagents	✓
alpha-HBDH	opt. DGKC	2 reagents	✓
Homocysteine	Enzymatic cycling	2 reagents	✓
beta-Hydroxybutyrate	Enzymatic	2 reagents	✓
Iron	Ferene	2 reagents	✓
Lactate	Enzymatic, UV	2 reagents	✓
LDH-L	IFCC	2 reagents	✓
LDH-P	opt. DGKC	2 reagents	✓
Lipase	Enzymatic, colorimetric	2 reagents	✓
Lithium	Enzymatic	2 reagents	✓
Magnesium	Xylidyl blue	Single reagent	✓
NEFA	ACOD-PAP	2 reagents	✓
Phosphorus Inorganic	Molybdate	Single reagent	✓
Potassium	Enzymatic	2 reagents	✓
Protein Total	Biuret	2 reagents	✓
Protein Total Mono	Biuret	Single reagent	✓
Protein Total in Urine/CSF	Pyrogallol red	Single reagent	✓
Pyridoxal-5'-Phosphate	for GOT (AST) and GPT (ALT)	Single reagent	✓
Sodium	Enzymatic	2 reagents	✓
Triglycerides	GPO-PAP	Single reagent	✓
UIBC	Ferene	2 reagents	✓
Urea	Urease/colorimetric	3 reagents	✓
Urea UV Auto	Urease/GLDH	2 reagents	✓
Uric Acid AOX	Enzymatic, colorimetric	2 reagents	✓
Uric Acid TBHBA	Enzymatic, colorimetric	2 reagents	✓
Zinc	5-Br-PAPS	Single reagent	✓



CLINICAL CHEMISTRY

Standards



	Concentration	CE
Albumin	5 g/dL	✓
Ammonia	approx. 250 µmol/L	✓
Bile Acids	50 µmol/L	✓
Calcium	10 mg/dL	✓
Chloride	100 mmol/L	✓
Cholesterol	200 mg/dL	✓
CO ₂	30 mmol/L	✓
Copper	100 µg/dL	✓
Creatinine	2 mg/dL	✓
Glucose	100 mg/dL	✓
beta-Hydroxybutyrate	1 mmol/L	✓
Iron	100 µg/dL	✓
Lithium	3 level set	✓
Magnesium	2 mg/dL	✓
NEFA	1 mmol/L	✓
Phosphorus	5 mg/dL	✓
Potassium	2 level set	✓
Protein Total	5 g/dL	✓
Protein Total in Urine/CSF	Urine: 1300 mg/L, CSF: 1100 mg/L	✓
Sodium	2 level set	✓
Triglycerides	200 mg/dL	✓
Urea	50 mg/dL	✓
Uric Acid	6 mg/dL	✓
Zinc	200 µg/dL	✓



CLINICAL CHEMISTRY

Calibrators



	Description	CE
Diacal Auto*	multi calibration serum	✓
Diacal Lipids*	lipid calibration plasma	✓
Diacal CK-MB*	1 level	✓
ADA*	1 level	✓
G6PDH*	1 level	✓
HbA1c Direct*	5 level series	✓
Homocysteine	5 level set	✓

*lyophilised

Controls

	Description	CE
Diacon N*	multi control serum, normal	✓
Diacon P*	multi control serum, abnormal	✓
Diacon Lipids*	lipid control serum, normal	✓
Diacon Lipids High*	lipid control serum, abnormal	✓
Diacon Urine	multi control urine, level 1 / level 2	✓
ADA*	2 level set	✓
Ammonia	2 level set	✓
CO₂	1 level	✓
G6PDH*	3 level set	✓
HbA1c Direct*	2 level set	✓
Homocysteine	4 level set	✓
Lithium*	2 level set	✓
Potassium*	2 level set	✓

*lyophilised



PROTEIN IMMUNOASSAYS



PROTEIN IMMUNOASSAYS

Reagents



	Configuration	CE
alpha-1 Acid Glycoprotein	Ab Reagent + Buffer	✓
alpha-1 Antitrypsin	Ab Reagent + Buffer	✓
alpha-1 Microglobulin	Latex Reagent + Buffer	✓
alpha-2 Macroglobulin	Ab Reagent + Buffer	✓
Antithrombin III	Ab Reagent + Buffer	✓
APO A1	Ab Reagent + Buffer	✓
APO B	Ab Reagent + Buffer	✓
ASO	Latex Reagent + Buffer	✓
beta-2 Microglobulin	Latex Reagent + Buffer	✓
C1 Esterase Inhibitor	Ab Reagent + Buffer	✓
Ceruloplasmin	Ab Reagent + Buffer	✓
Complement C3	Ab Reagent + Buffer	✓
Complement C4	Ab Reagent + Buffer	✓
CRP	Ab Reagent + Buffer	✓
CRP HS	Latex Reagent + Buffer	✓
CRP Uhs	Latex Reagent + Buffer	✓
Cystatin C	Latex Reagent + Buffer	✓
D-Dimer	Latex Reagent + Buffer	✓
Ferritin	Latex Reagent + Buffer	✓
Fibrinogen	Ab Reagent + Buffer	✓
Haptoglobin	Ab Reagent + Buffer	✓
HbA1c Direct	Ab Reagent + Latex Reagent	✓
H-Reagent*		
IgA	Ab Reagent + Buffer	✓
IgE	Latex Reagent + Buffer	✓
IgG	Ab Reagent + Buffer	✓
IgM	Ab Reagent + Buffer	✓
Kappa Light Chain	Ab Reagent + Buffer	✓
Lambda Light Chain	Ab Reagent + Buffer	✓
Lp(a)	Latex Reagent + Buffer	✓
Microalbumin	Ab Reagent + Buffer	✓
Myoglobin	Latex Reagent + Buffer	✓
Prealbumin	Ab Reagent + Buffer	✓
RF	Ab Reagent + Buffer	✓
Transferrin	Ab Reagent + Buffer	✓

* general laboratory equipment

PROTEIN IMMUNOASSAYS

Calibrators



	Description	CE
alpha-1 Microglobulin	1 level	✓
APO A1/B*	1 level	✓
ASO	low / high / super high	✓
beta-2 Microglobulin	4 level series	✓
CRP	low / high / super high / 5 level series	✓
CRP HS	1 level	✓
CRP Uhs	5 level series, universal / high sensitivity range	✓
Cystatin C	1 level	✓
D-Dimer*	5 level series	✓
Ferritin	5 level series	✓
Fibrinogen*	1 level	✓
HbA1c Direct*	5 level series	✓
IgE	5 level series	✓
Lp(a)	low / high / 4 level series	✓
Microalbumin	high / 5 level series	✓
Myoglobin	4 level series	✓
Pediatric	1 level	✓
Protein	low / high / 5 level series	✓
RF	low / high / super high / 5 level series	✓
Transferrin	5 level series	✓

*lyophilised



PROTEIN IMMUNOASSAYS

Controls



	Description	CE
alpha 1-Microglobulin	1 level	✓
APO A1/B*	1 level	✓
ASO	1 level	✓
beta 2-Microglobulin	1 level	✓
CRP	low / high	✓
CRP HS	1 level	✓
CRP Uhs	2 level set, universal / high sensitivity range	✓
Cystatin C	2 level set	✓
D-Dimer*	2 level set	✓
Ferritin	low / high	✓
Fibrinogen*	1 level	✓
HbA1c Direct*	2 level set	✓
IgE	low / high	✓
Lp(a)	low / high	✓
Microalbumin	1 level	✓
Myoglobin	2 level set	✓
Pediatric	1 level	✓
Protein	low / high	✓
RF	1 level	✓
Triple (ASO,CRP,RF)	1 level	✓

*lyophilised





DIAQUICK RAPID TESTS



DIAQUICK RAPID TESTS

Drugs of Abuse Urine Tests



		Format	CE
Amphetamine	AMP	Cassette / Dipstick	✓
Barbiturates	BAR	Cassette / Dipstick	✓
Benzodiazepines	BZO	Cassette / Dipstick	✓
Buprenorphine	BUP	Cassette	✓
Cocaine	COC	Cassette / Dipstick	✓
Ethylglucuronide	ETG	Cassette	✓
Ecstasy	MDMA	Cassette / Dipstick	✓
Fentanyl	FYL	Cassette	✓
Ketamine	KET	Cassette	✓
Lysergic Acid Diethylamide	LSD	Cassette	✓
Marihuana / Cannabis	THC	Cassette / Dipstick	✓
Methadone	MTD	Cassette / Dipstick	✓
Methamphetamine	MET	Cassette / Dipstick	✓
Opiates, Morphine, Heroin	MOP	Cassette / Dipstick, 300 ng/mL	✓
Opiates, Morphine, Heroin	OPI	Cassette, 2000 ng/mL	✓
Oxycodone	OXY	Cassette	✓
Phencyclidine	PCP	Dipstick	✓
Spice, Synthetic Marihuana	K2	Cassette	✓
Tramadol	TRA	Cassette	✓
Tricyclic Antidepressants	TCA	Cassette	✓
Zolpidem	ZOL	Cassette	✓
6-Monoacetylmorphine	6-MAM	Cassette	✓
Multi-3 Drug	Various combinations	Panel	✓
Multi-4 Drug	Various combinations	Panel	✓
Multi-5 Drug	Various combinations	Panel	✓
Multi-6 Drug	Various combinations	Panel	✓
Multi-7 Drug	Various combinations	Panel	✓
Multi-10 Drug	Various combinations	Panel	✓
DOA Multi-6 Cup			✓

Drugs of Abuse Saliva Tests

	Method	CE
Alcohol Saliva Strip	Colorimetric saliva test	✓

DIAQUICK RAPID TESTS

Infectious Diseases



	Format	Sample Type	CE
Adenovirus	Cassette	Faeces	✓
Chlamydia	Cassette	Cervical urethral swab / urine	✓
Covid-19 Ag	Cassette	Swab	✓
Dengue Ag/Ab Combo	Cassette	Serum / plasma / whole blood	✓
Dengue IgG/IgM Ab	Cassette	Serum / plasma / whole blood	✓
Dengue NS1 Ag	Cassette	Serum / plasma / whole blood	✓
H. pylori Ab	Cassette	Serum / plasma / whole blood	✓
H. pylori Stool Ag	Cassette	Faeces	✓
Influenza A/B	Dipstick	Nasal throat swab	✓
Malaria P.f.	Cassette	Whole blood	✓
Malaria P.f./Pan	Cassette	Whole blood	✓
Mononucleosis	Cassette	Serum / plasma / whole blood	✓
Rotavirus	Cassette	Faeces	✓
Rota / Adeno Combi	Cassette	Faeces	✓
S. typhi IgG/IgM Ab	Cassette	Serum / plasma / whole blood	✓
S. typhi /paratyphi Ag	Cassette	Faeces / serum / plasma / whole blood	✓
Strep. A	Cassette / Dipstick	Throat swab	✓
Syphilis	Cassette / Dipstick	Serum / plasma / whole blood	✓

AIDS, Hepatitis

	Format	Sample Type	CE
HBsAb	Dipstick	Serum / plasma	
HBsAg	Cassette / Dipstick	Serum / plasma / whole blood	
HCV Ab	Cassette	Serum / plasma / whole blood	
HIV Ab	Cassette	Serum / plasma / whole blood	
HIV Triline 1/2/0	Cassette	Serum / plasma / whole blood	

DIAQUICK RAPID TESTS

ToRCH



	Format	Sample Type	CE
Toxoplasma IgM	Cassette	Serum / plasma	✓
Toxoplasma IgG/IgM	Cassette	Serum / plasma	✓
Rubella IgM	Cassette	Serum / plasma	✓
CMV IgM	Cassette	Serum / plasma	✓
HSV 1/2 IgM	Cassette	Serum / plasma	✓

Pregnancy / Fertility

	Format	Sample Type	CE
hCG	Cassette / Dipstick	Urine	✓
hCG Combo	Cassette / Dipstick	Urine / serum	✓
LH	Cassette / Dipstick	Urine	✓

Tumour Markers

	Format	Sample Type	CE
AFP	Cassette	Serum / plasma / whole blood	✓
CEA	Cassette	Serum / plasma / whole blood	✓
FOB	Cassette	Faeces	✓
FOB-TRF Combi	Cassette	Faeces	✓
PSA	Cassette	Serum / plasma / whole blood	✓

Cardiac Markers

	Format	Sample Type	CE
Troponin I	Cassette	Serum / plasma / whole blood	✓
Troponin T	Cassette	Serum / plasma / whole blood	✓
Cardiac Combo	Cassette	Serum / plasma / whole blood	✓

Others

	Format	Sample Type	CE
CRP	Cassette	Serum / plasma / whole blood	✓
Microalbumin	Dipstick	Urine	✓



DIALAB
Multi DOA

DIALAB
Cassette
A-F

DIALAB
Cassette
F-H



SEROLOGY





SEROLOGY

Latex- & Haemagglutination



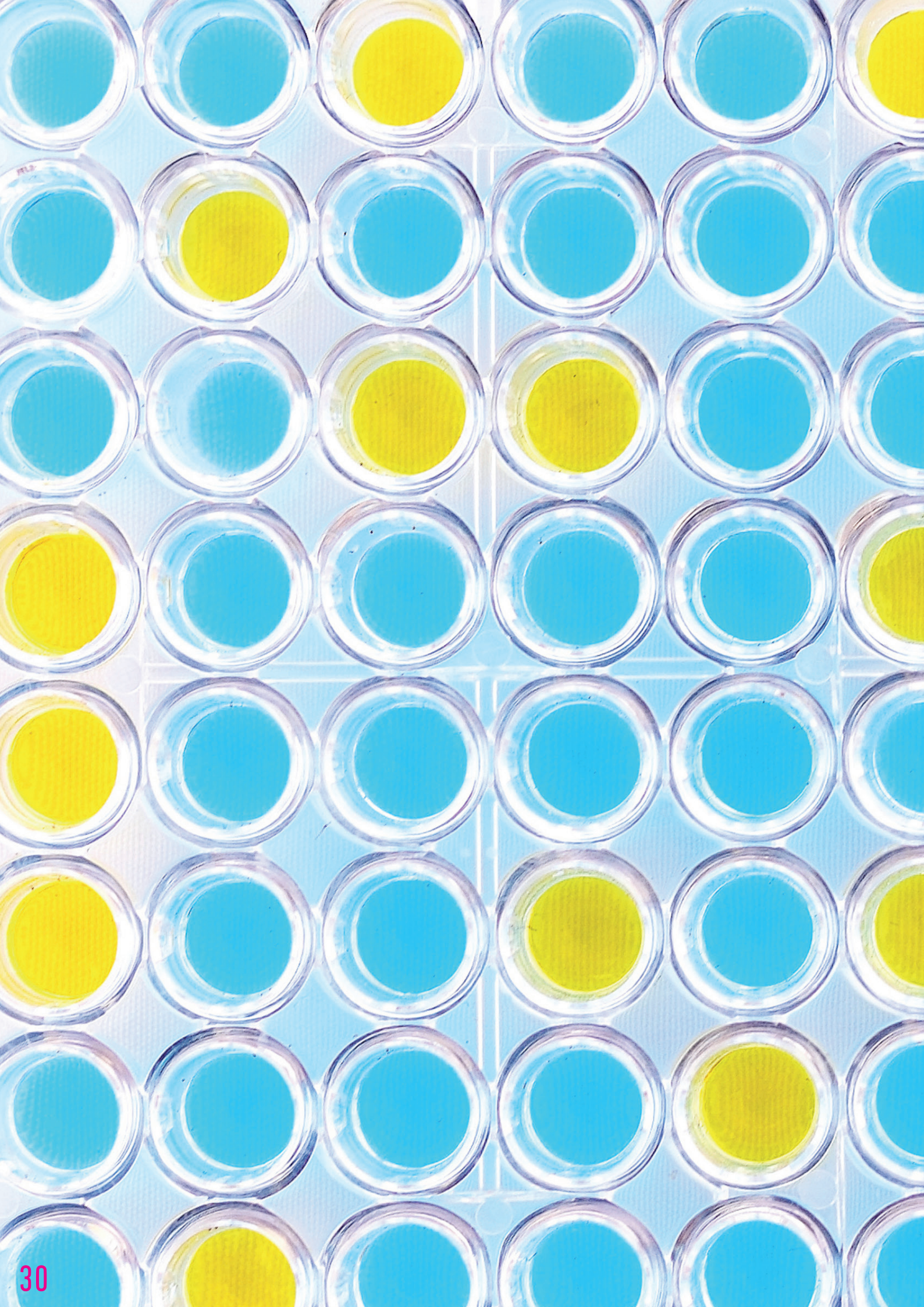
	Parameter	CE
ASO	Anti-Streptolysin O Ab	✓
CRP	C-reactive Protein	✓
IM	Infectious Mononucleosis heterophile Ab	✓
RF	Rheumatoid Factor	✓
Toxoplasma gondii	Anti-T.gondii Ab	
Waler Rose	Rheumatoid Factor	✓

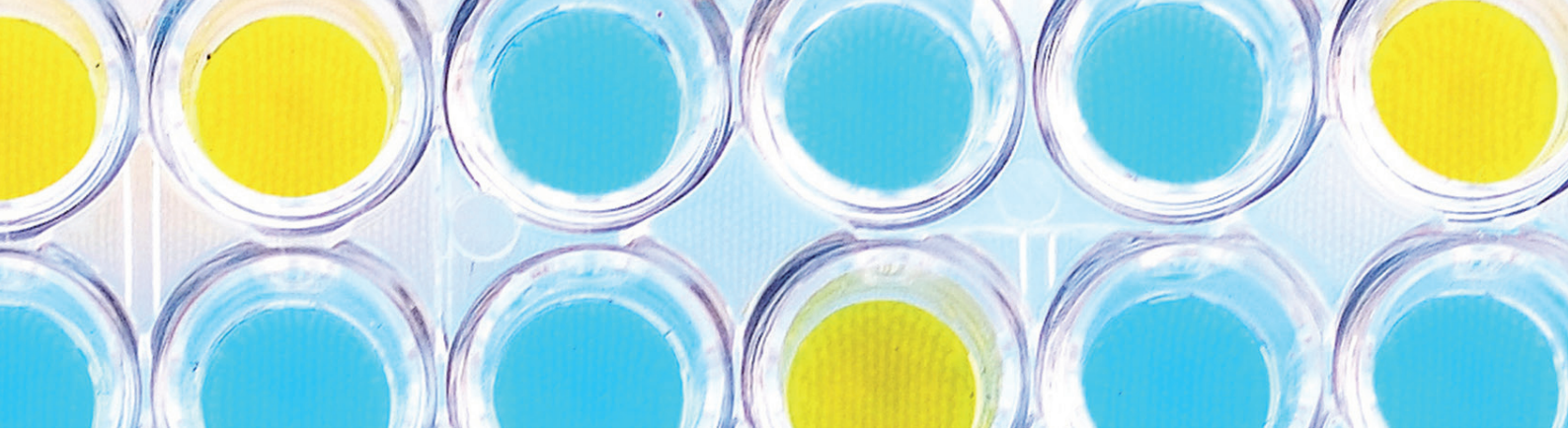
Bacterial Agglutination

	Parameter	CE
Brucella abortus	Anti-Brucella Ab	✓
Proteus OX19	Anti-Rickettsia Ab	✓
Proteus OX2	Anti-Rickettsia Ab	✓
Proteus OXK	Anti-Rickettsia Ab	✓
Rose Bengal	Anti-Brucella Ab	✓
Salmonella paratyphi AH	Anti-Salmonella Ab	✓
Salmonella paratyphi AO	Anti-Salmonella Ab	✓
Salmonella paratyphi BH	Anti-Salmonella Ab	✓
Salmonella paratyphi BO	Anti-Salmonella Ab	✓
Salmonella paratyphi CH	Anti-Salmonella Ab	✓
Salmonella paratyphi CO	Anti-Salmonella Ab	✓
Salmonella typhi H	Anti-Salmonella Ab	✓
Salmonella typhi O	Anti-Salmonella Ab	✓
Salmonella total Kit	8 Salmonella reagents, optional controls	✓
Polyvalent Controls	Positive / negative, for bacterial agglutination assays	✓

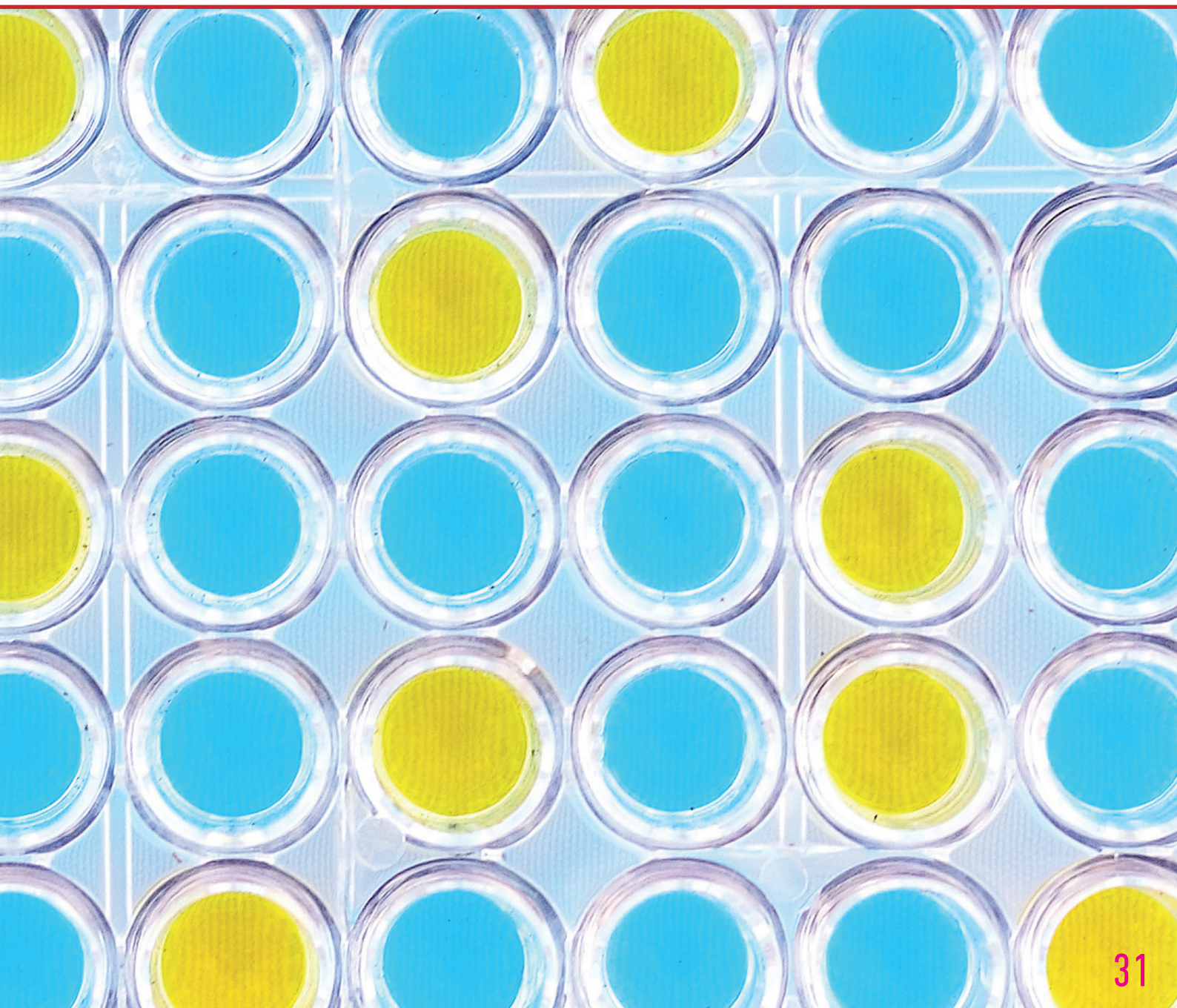
Syphilis

	Parameter	CE
Syphilis RPR	Indirect Syphilis Test (Reagins)	✓
Syphilis TPHA	Anti-T.pallidum Ab	✓
Syphilis VDRL	Indirect Syphilis Test (Reagins)	✓





ELISA TESTS



ELISA TESTS

AIDS, Hepatitis



	Method	CE
HAV IgM	Cut-off	
HBcAb	Cut-off	
HBc IgM capture	Cut-off	
HBeAb	Cut-off	
HBeAg	Cut-off	
HBsAb	Cut-off	
HBsAb one step	Quantitative	
HBsAg Sensitive	Cut-off	✓
HCV Ab Sensitive	Cut-off	✓
HIV 1+2 Ab	Cut-off	✓
HIV 1+2 Ag/Ab	Cut-off	✓
HTLV 1+2	Cut-off	

ToRCH

	Method	CE
CMV IgG	Cut-off	
CMV IgM	Cut-off	
Rubella IgG	Cut-off	
Rubella IgM	Cut-off	
Toxoplasma IgG	Cut-off	
Toxoplasma IgM	Cut-off	

ELISA TESTS

Other Infectious Diseases



	Method	CE
Anti-Syphilis Ab	Cut-off	✓

Fertility

	Method	CE
b-hCG	Quantitative	✓
FSH	Quantitative	✓
LH	Quantitative	✓
Prolactin	Quantitative	✓

Tumour Markers

	Method	CE
Ferritin	Quantitative	✓
PSA	Quantitative	✓



ELISA TESTS

Autoimmune Diseases



	Method	CE
ANA Combi 8	Cut-off	✓
ANA Screen 8	Cut-off	✓
ANA-9-Line Immunoblot 16	Semi-quantitative	✓
Anti-beta-2-Glycoprotein I IgG/IgM	Quantitative	✓
Anti-Cardiolipin IgG/IgM	Quantitative	✓
Anti-CRA	Quantitative	✓
Anti-DGP IgA	Quantitative	✓
Anti-DGP IgG	Quantitative	✓
Anti-Gliadin IgA	Quantitative	✓
Anti-Gliadin IgG	Quantitative	✓
Anti-Insulin	Quantitative	✓
Anti-Phospholipid Screen IgG/IgM	Quantitative	✓
Anti-Transglutaminase IgA	Quantitative	✓
Anti-Transglutaminase IgG	Quantitative	✓
Anti-Transglutaminase Screen	Quantitative	✓
ENA-6 Screen	Cut-off	✓
Nucleo-9-Line Immunoblot 08/16	Semi-quantitative	✓
Rheumatoid Factor IgA	Quantitative	✓
Rheumatoid Factor IgG	Quantitative	✓



ELISA TESTS

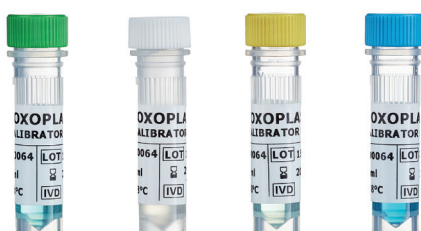
Steroids



	Method	CE
17-a-OH Progesterone	Quantitative	✓
17-beta-Estradiol	Quantitative	✓
Androstenedione	Quantitative	✓
Cortisol	Quantitative	✓
DHEA-S	Quantitative	✓
Free Testosterone	Quantitative	✓
Progesterone	Quantitative	✓
Testosterone	Quantitative	✓
Total 25-OH Vitamin D	Quantitative	✓

Thyroids

	Method	CE
Anti-TG IgG	Quantitative	✓
Anti-TPO IgG	Quantitative	✓
FT3	Quantitative	✓
FT4	Quantitative	✓
T3	Quantitative	✓
T4	Quantitative	✓
TSH	Quantitative	✓





BLOOD GROUPING & RHESUS TYPING





BLOOD GROUPING & RHESUS TYPING

ABO & Rhesus Typing



CE

Anti-A, monoclonal	✓
Anti-B, monoclonal	✓
Anti-AB, monoclonal	✓
Anti-D (IgM/IgG), monoclonal	✓
Anti-A1 Lectin	
Anti-C, monoclonal	✓
Anti-E, monoclonal	✓
Anti-c, monoclonal	✓
Anti-e, monoclonal	✓
Anti-Cw, monoclonal	✓

Rare Blood Grouping Reagents

CE

Anti-H Lectin	✓
Anti-k, monoclonal	✓
Anti-K, monoclonal	

Auxiliary Reagents

CE

Anti-D Negative Control	
Anti-HG, polyspecific / monoclonal	✓
BSA 22%	✓
BSA 30%	✓
LISS Solution	✓
Papain	✓



COAGULATION & FIBRINOLYSIS





COAGULATION & FIBRINOLYSIS

Reagents



	Description	CE
Thromboplastin (PT) liquid	ISI 1.2-1.35	✓
Thromboplastin (PT)-S	ISI 1.15-1.3	✓
APTT-EA liquid	Ellagic acid activated	✓
APTT-S liquid	Silica activated	✓
Fibrinogen-Kit	Human, clotting	✓
Human Thrombin	For FIB, clotting	✓
Thrombin Time (TT), human	Human, clotting	✓
D-Dimer Latex Agglutination Kit	Manual, semi-quantitative	✓
D-Dimer for DIAcheck & Coalyser	Immunoturbidimetric	✓
Deficient Plasma Factor II	For PT	✓
Deficient Plasma Factor V	For PT	✓
Deficient Plasma Factor VII	For PT	✓
Deficient Plasma Factor VIII	For APTT	✓
Deficient Plasma Factor IX	For APTT	✓
Deficient Plasma Factor X	For PT	✓
Deficient Plasma Factor XI	For APTT	✓
Deficient Plasma Factor XII	For APTT	✓

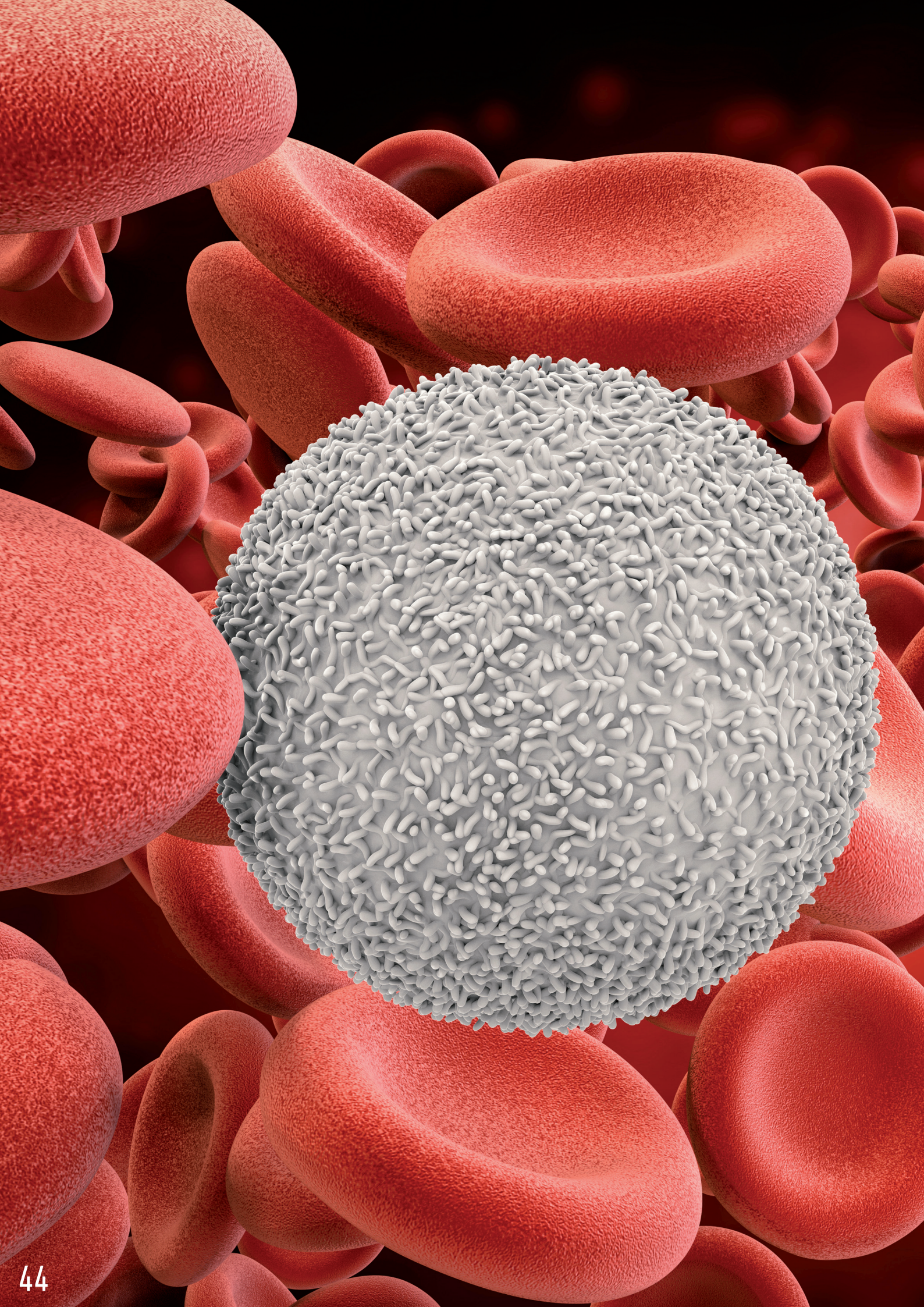
Auxiliary Reagents

	Description	CE
Calcium Chloride, 0.025 M*	For APTT-S	
Calcium Chloride, 0.020 M*	For APTT-EA	
Imidazole Buffered Saline*	For FIB	

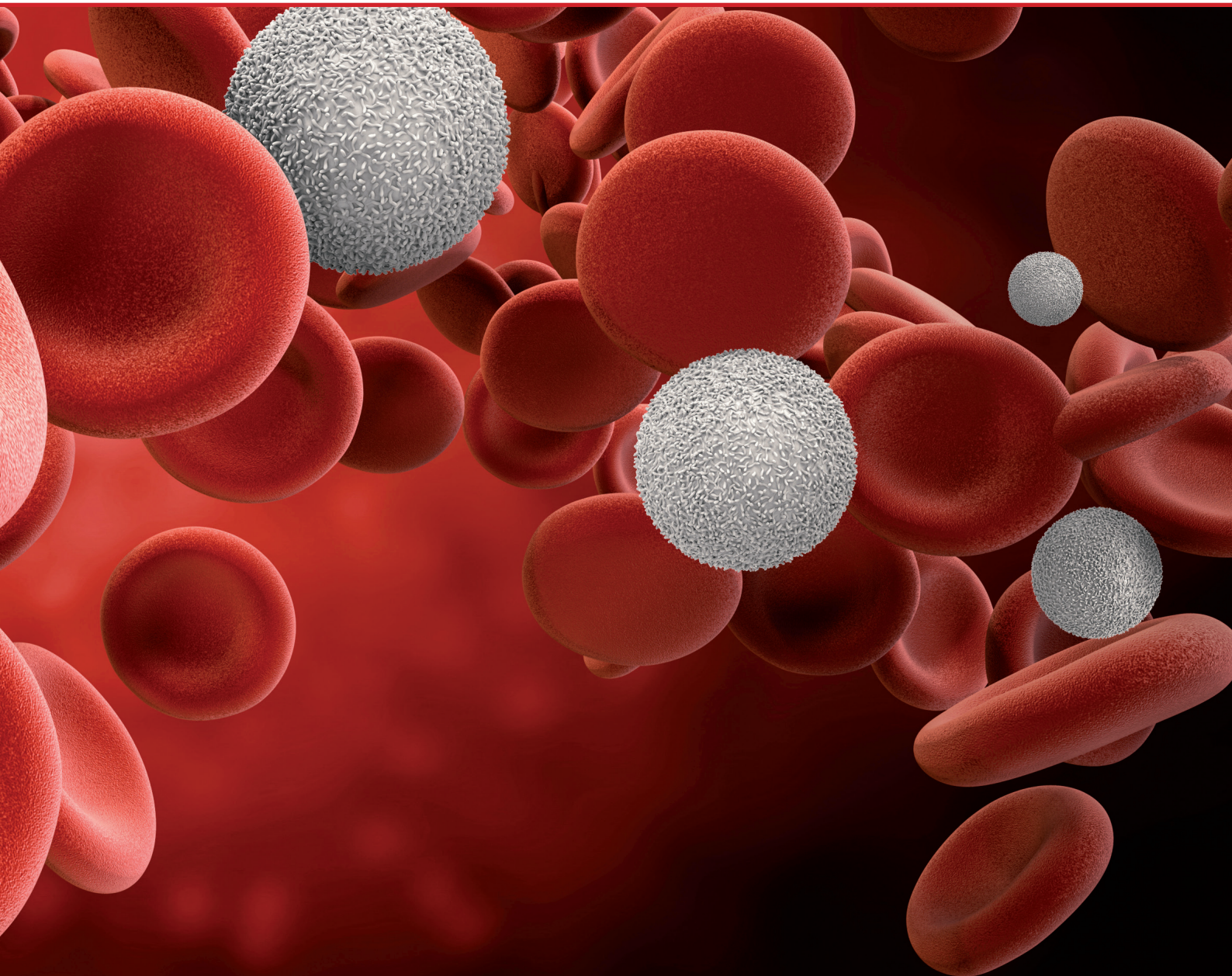
Control & Reference Plasmas

	Description	CE
Normal Coagulation Reference Plasma	For PT, FIB	✓
Normal Coagulation Control Plasma	For PT, APTT, FIB, TT	✓
Abnormal Coagulation Control Plasma	For PT, APTT, FIB	✓
Special Calibration Plasma	For Deficient Plasma Factors	✓
Special Control Plasma Normal	For Deficient Plasma Factors	✓
Special Control Plasma Abnormal	For Deficient Plasma Factors	✓
D-Dimer Control Low	For DIAcheck & Coalyser	✓
D-Dimer Control High	For DIAcheck & Coalyser	✓

*general laboratory equipment



HAEMATOLOGY





HAEMATOLOGY DLB5



5-diff Haematology Analyser (HUM / VET)

-
- 1 Analyser - 2 functions:
switch between 3-diff and 5-diff
-
- 18 parameters + 3 histograms (3-diff):
WBC, RBC, THR, Hb, Hct, Lym%, Lym#, Mon%, Mon#,
Gra%, Gra#, MCV, MCH, MCHC, RDW, MPV, Pct, PDW
-
- 21 parameters + 4 histograms (5-diff):
WBC, RBC, THR, Hb, Hct, Lym%, Lym#, Mon%, Mon#,
Neu%, Neu#, Eo%, Eo#, Ba%, MCV, MCH, MCHC, RDW,
MPV, Pct, PDW
-
- CE marked
-



DLB3

3-diff Haematology Analyser (HUM / VET)

-
- 18 parameters + 3 histograms:
WBC, RBC, THR, Hb, Hct, Lym%, Lym#, Mon%, Mon#,
Gra%, Gra#, MCV, MCH, MCHC, RDW, MPV, Pct, PDW
-
- CE marked
-



HAEMATOLOGY

Human line



Reagents	Description	CE
Diadiff	for DLB5 and DLB3	✓
Dialuent	for DLB5 and DLB3	✓
Diatergent	for DLB5 and DLB3	✓
Dialys-E0	for DLB5	✓
Rinse Concentrate	for DLB5 and DLB3	
DLB3 Pack 125H	3-diff	✓
DLB5 Pack 125H	5-diff	✓

Veterinary line

Reagents	Description
Diadiff VET	for DLB5 VET
Dialuent VET	for DLB5 VET and DLB3 VET
Diatergent VET	for DLB5 VET and DLB3 VET
Dialys-E0 VET	for DLB5 VET
Rinse Concentrate	for DLB5 VET and DLB3 VET
DLB3 Pack 125V	3-diff
DLB5 Pack 125V	5-diff



HAEMATOLOGY

General Features for DLB5 and DLB3



- Results in 50 seconds (3-diff) or 80 seconds (5-diff)
- For venous and capillary blood
- Only 10 – 30 µL blood volume
- No warm-up, temperature independent
- Colour display
- Printer: DLB5 internal, DLB3 external (not included)
- Connection to external computer, keyboard and barcode reader
- 5-diff: 4 reagents plus Rinse, 3-diff: 3 reagents plus Rinse
- Blood Clot Micro Filter
- Unique preservation solution » no frequent rinsing
- Electromagnetic valves » less service needed
- Cleaning every 3 months only
- Service once a year
- Languages: German, English, French (Spanish on request)
- Veterinary instrument: 6 species by default, 2 species freely selectable



URINE STRIPS





URINE STRIPS

Regular Strips



	Parameters	CE
Urine Strip 1	Glu	✓
Urine Strip 2	Glu, Ket	✓
Urine Strip 2A	Glu, Pro	✓
Urine Strip 2MC	Mal, Cre	✓
Urine Strip 3A	Glu, pH, Pro	✓
Urine Strip 4	Glu, pH, Ket, Pro	✓
Urine Strip 4SG	Glu, SG, pH, Pro	✓
Urine Strip 5	Glu, pH, Ket, Pro, Blo	✓
Urine Strip 9	Glu, Bil, Ket, SG, Blo, pH, Pro, Uro, Nit	✓
Urine Strip 10C	Glu, Bil, Ket, SG, Blo, pH, Pro, Uro, Nit, Leu	✓
Urine Strip 11	Glu, Bil, Ket, SG, Blo, pH, Pro, Uro, Nit, Leu, Asc	✓
Urine Strip 13	Glu, Bil, Ket, SG, Blo, pH, Pro, Uro, Nit, Leu, Asc, Mal, Cre	✓

Strip with Mesh Technology

	Parameters	CE
Urine Strip 10ME	SG, pH, Leu, Nit, Pro, Glu, Ket, Uro, Bil, Blo	✓

Control

	Parameters	CE
Urine Comby Control	Control set for the quality control of urine strips and analysers	✓





INSTRUMENTS



INSTRUMENTS

Photometer DTN-405



Semiautomatic photometer

Flow-cell or cuvette mode

Endpoint and kinetic tests

Internal thermal printer

Photometer with rotating filter wheel

5 standard filters: 340, 405, 505, 546, 578 nm

3 free slots for optional filters

Up to 60 methods programmable

30 μ L flow-cell

Tungsten halogen lamp

6" LCD display

CE marked



Photometer DTN-510K

Semiautomatic photometer

Flow-cell or cuvette mode

Endpoint and kinetic tests

Internal thermal printer

Photometer with rotating filter wheel

7 standard filters: 340, 405, 450, 500, 546, 578, 670 nm

1 free slot for optional filters

Up to 130 methods programmable

30 μ L flow-cell

Tungsten halogen lamp

7" color LCD display

CE marked



INSTRUMENTS

Autolyser 100



Fully automated chemistry analyser

Throughput: Up to 100 tests/hr

Stand alone device with built-in computer (touchscreen)

Photometer with rotating filter wheel

8 standard filters: 340, 405, 450, 510, 546, 578, 630, 670 nm

Tungsten halogen lamp

Disposable reaction cuvettes

Reagent cooling: No

No. of sampling arms: 1 + 1 mixing arm

Barcode readers for sample and reagents: not included

Water & Waste: external containers

CE marked



Autolyser

Fully automated chemistry analyser

Optional ISE (indirect): Na⁺, Cl⁻, K, Co₂

Throughput chemistry only: up to 250 tests/hr

Throughput with ISE: up to 220 tests/hr

Operated by external PC (PC not included)

Static photometer with 10 WL (340 - 700 nm)

Optical glass cuvettes with washing system

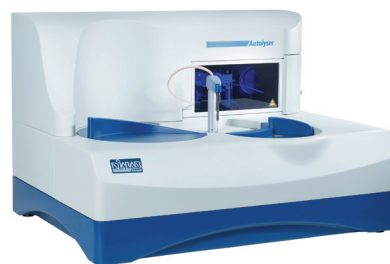
Reagent cooling: Yes

No. of sampling arms: 1

Barcode readers for samples and reagents: optional

Water & Waste: external containers

CE marked



Autolyser 450

Fully automated chemistry analyser

Optional ISE (indirect): Na⁺, Cl⁻, K, Co₂

Throughput chemistry only: up to 450 tests/hr

Throughput with ISE: up to 690 tests/hr

Operated by external PC (PC not included)

Static photometer (no filter wheel)

14 filters: 340, 380, 405, 436, 478, 510, 546, 578, 600, 630, 660, 700, 740, 800 nm

Optical glass cuvettes with washing system

Reagent cooling: Yes

No. of sampling arms: 3

Barcode readers for samples and reagents: included

Water & Waste: external containers

CE marked



INSTRUMENTS

DIAREader ELX800G



Semiautomatic ELISA reader

8 reading channels

8 positions filter wheel

Measuring range from 400 – 750 nm

Touchscreen

Internal printer

CE marked



DIAWasher ELX50/8

Semiautomatic ELISA washer

For washing single strips or full plates

Up to 100 washer programs storable

Wash, prime, rinse and aspiration programs

Shaking function

Liquid level alarm

CE marked



INSTRUMENTS

DIACheck® C1



- 1 channel coagulometer
- Fully optical measurement (620 nm)
- Clotting, NOAC and immunoturbidimetric assays
- Microvolumes (totally 75 µL)
- External printer optional
- Autostart
- Up to 3 calibrations points
- CE marked



DIACheck® C2 | C4

- 2 channel / 4 channel coagulometer
- Fully optical measurement (405 nm)
- Clotting, chromogenic, NOAC and immunoturbidimetric assays
- Microvolumes (totally 75 µL)
- External printer optional
- Autostart
- Up to 5 calibration points
- CE marked



CoaLyser

- Fully automated Coagulation Analyser
- Throughput: 137 PT/h, 60 APTT/h
- Measuring volume: min. 150 µL
- Colour touch screen
- Up to 50 methods programmable
- STAT and QC program
- CE marked





INSTRUMENTS

Urine Strip Reader 40



- Throughput: 60 tests/h
- Closed system with barcode
- Data memory: 2000 patient results
- Built-in thermal printer
- For all urine strips except 1 parameter & 10ME
- CE marked

Urine Strip Analyser 500



- Throughput: 500 tests/h
- Large touch screen
- Closed system with barcode
- Data memory: 2000 patient results
- Built-in thermal printer
- For all urine strips except 1 parameter & 10ME
- CE marked





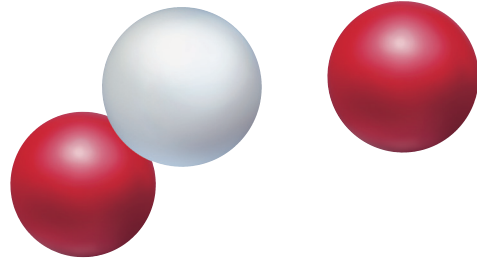
DMLAB

DMLAB

DMLAB

DMLAB

objekt
M55



DIALAB®

Austria

DIALAB® GmbH

IZ NOE-Sued

Hondastrasse, Objekt M55

A-2351 Wiener Neudorf

Phone: +43-2236-66 09 10-0

Fax: +43-2236-66 09 10-30

E-mail: office@dialab.at

www.dialab.at