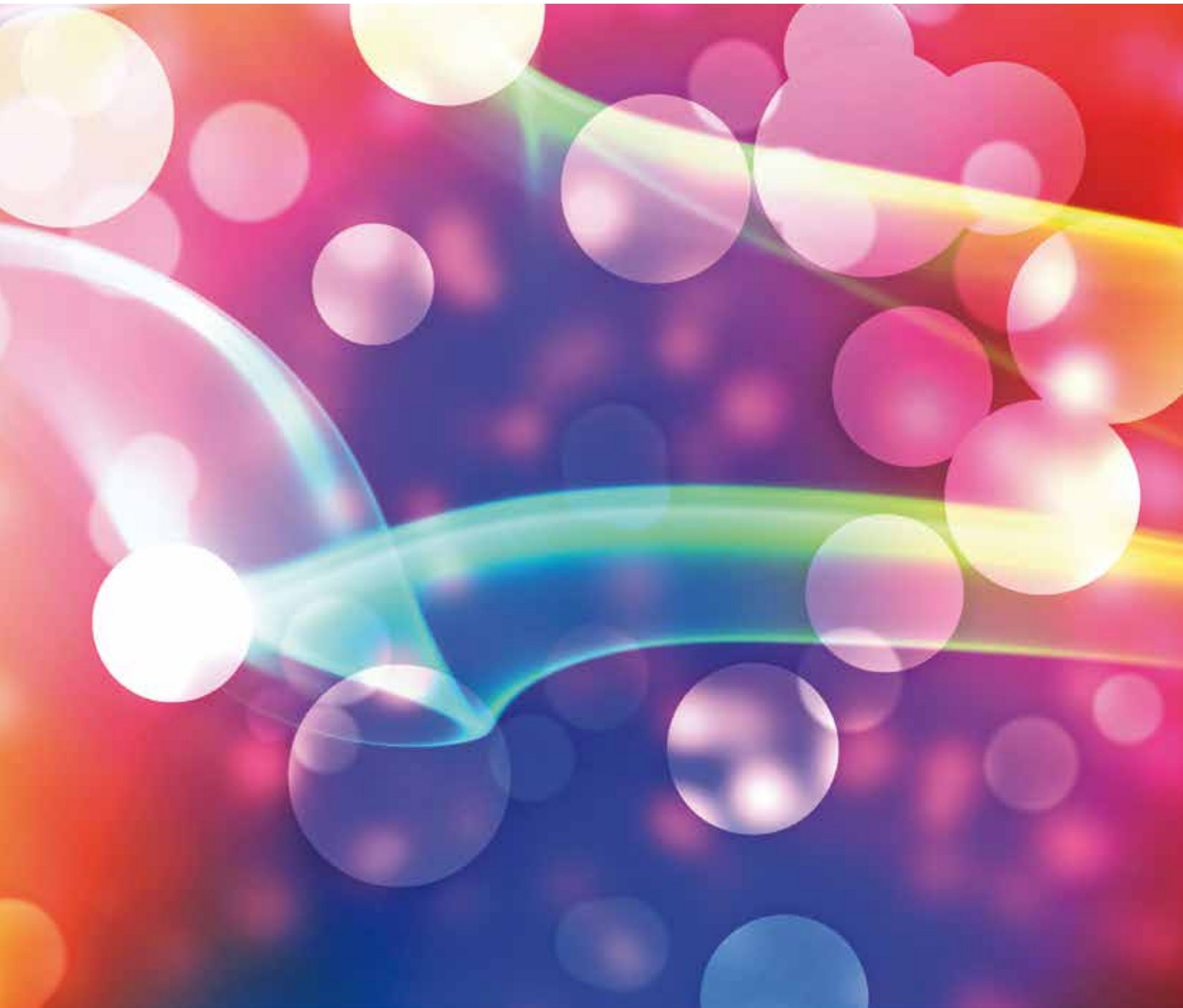


The logo for Dianab, featuring the word "DIANAB" in a stylized, blue, outlined font with a registered trademark symbol (®) to the upper right.

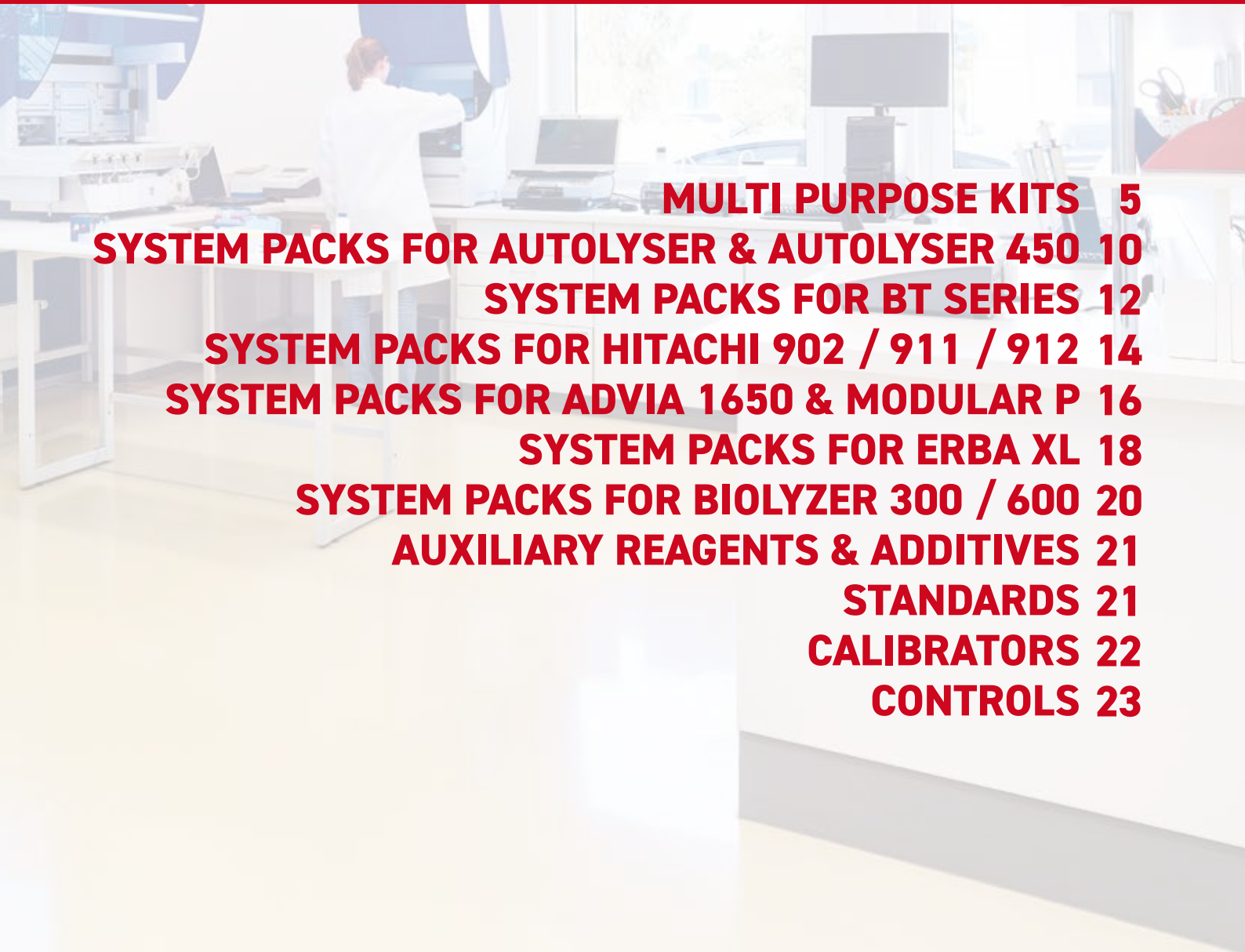
DIANAB[®]

CLINICAL CHEMISTRY





INDEX



MULTI PURPOSE KITS	5
SYSTEM PACKS FOR AUTOLYSER & AUTOLYSER 450	10
SYSTEM PACKS FOR BT SERIES	12
SYSTEM PACKS FOR HITACHI 902 / 911 / 912	14
SYSTEM PACKS FOR ADVIA 1650 & MODULAR P	16
SYSTEM PACKS FOR ERBA XL	18
SYSTEM PACKS FOR BIOLYZER 300 / 600	20
AUXILIARY REAGENTS & ADDITIVES	21
STANDARDS	21
CALIBRATORS	22
CONTROLS	23

Features & Benefits



- Liquid stable reagents, ready to use
- Convenient monoreagent or 4+1 format
- Long shelf life
- Fully automated, direct methods
- Excellent performance
- High resistance to interfering substances
- Very good correlation with competitor tests
- Traceable to reference methods and/or reference materials
- Easily applicable on automatic instruments
- Wide product range, different methods
- 4 different standard kit sizes
- Special system packs for automatic systems

OEM / Bulk

DIALAB® offers different OEM capabilities:

- Bulk: 10 L (single reagent) or 12.5 L (2 reagents)
- Semibulk: 1 L (single reagent) or 1.25 L (2 reagents)
- Unlabelled vials (without box and without labels)
- Customised kits

Customised OEM offers are possible on request.

Multi Purpose Kits



	Method	Configuration	Kit Size	REF	CE
Adenosine Deaminase (ADA)	Enzymatic, colorimetric	2 reagents	6 x 25 mL	913816	✓
			3 x 25 mL	913813	✓
Albumin	BCG	Single reagent	4 x 250 mL	D09550	✓
			5 x 100 mL	D97203	✓
			5 x 50 mL	D00204	✓
			5 x 25 mL	D00205	✓
			5 x 10 mL	D00206	✓
Alkaline Phosphatase	mod. IFCC	2 reagents	5 x 100 mL	D95564	✓
			5 x 50 mL	D95565	✓
			5 x 25 mL	D00523	✓
			5 x 10 mL	D00524	✓
Ammonia	Enzymatic, UV	Single reagent	5 x 10 mL	N08160	✓
alpha-Amylase	CNP-G3	Single reagent	5 x 100 mL	397758	✓
			5 x 50 mL	397759	✓
			5 x 25 mL	300760	✓
			5 x 10 mL	396754	✓
alpha-Amylase	mod. IFCC	2 reagents	5 x 100 mL	D94570	✓
			5 x 50 mL	D94571	✓
			5 x 25 mL	D00578	✓
			5 x 10 mL	D96569	✓
alpha-Amylase Pancreatic	ET-G7PNP	2 reagents	5 x 100 mL	D00582	✓
			5 x 50 mL	D94577	✓
			5 x 25 mL	D00590	✓
			5 x 10 mL	D96568	✓
Bile Acids	Enzymatic cycling	2 reagents	5 x 100 mL	903110	✓
			5 x 50 mL	903115	✓
			5 x 25 mL	903120	✓
			5 x 10 mL	903125	✓
Bilirubin Auto Direct	DCA	2 reagents	5 x 100 mL	D96543	✓
			5 x 50 mL	D96544	✓
			5 x 25 mL	D00547	✓
			5 x 10 mL	D00548	✓
Bilirubin Auto Total	DCA	2 reagents	5 x 100 mL	D96531	✓
			5 x 50 mL	D96532	✓
			5 x 25 mL	D00535	✓
			5 x 10 mL	D00536	✓
Bilirubin Direct	Jendrassik Grof	2 reagents	5 x 100 mL	102002	✓
			5 x 50 mL	102012	✓
			5 x 25 mL	113022	✓

Multi Purpose Kits



	Method	Configuration	Kit Size	REF	CE
Bilirubin Total	Jendrassik Grof	2 reagents	5 x 100 mL	102001	✓
			5 x 50 mL	102011	✓
			5 x 25 mL	116021	✓
Bilirubin Direct/Total	Jendrassik Grof	3 reagents	4 x 100 mL	103200	✓
			4 x 50 mL	103210	✓
			4 x 25 mL	116320	✓
Calcium	Arsenazo	Single reagent	5 x 100 mL	D01376	✓
			5 x 50 mL	D01375	✓
			5 x 25 mL	D01377	✓
			5 x 10 mL	D01378	✓
Calcium	CPC	2 reagents	5 x 100 mL	D99097	✓
			5 x 50 mL	D95098	✓
			5 x 25 mL	D00102	✓
			5 x 10 mL	D00100	✓
Carbon Dioxide (CO ₂)	PEP-C	Single reagent	5 x 50 mL	N00043/20	✓
Chloride	Mercuric thiocyanate	Single reagent	5 x 100 mL	D01223	✓
			5 x 50 mL	D01225	✓
			5 x 25 mL	D01227	✓
			5 x 10 mL	D01228	✓
Cholesterol	CHOD-PAP	Single reagent	4 x 250 mL	D08115	✓
			5 x 100 mL	D95116	✓
			5 x 50 mL	D98118	✓
			5 x 25 mL	D00119	✓
			5 x 10 mL	D00123	✓
Cholesterol HDL Direct	Enzymatic	2 reagents	5 x 100 mL	F21100	✓
			5 x 50 mL	F21115	✓
			5 x 25 mL	F21116	✓
			5 x 10 mL	F21117	✓
Cholesterol HDL Precipitant	Precipitation	Single Reagent	5 x 100 mL	D14125	✓
			5 x 50 mL	D00127	✓
			5 x 25 mL	D00124	✓
			5 x 10 mL	D00129	✓
Cholesterol LDL Direct	Enzymatic	2 reagents	5 x 50 mL	F21365	✓
			5 x 25 mL	F21366	✓
			5 x 10 mL	F21367	✓
Cholesterol LDL Precipitant	Precipitation	Single Reagent	5 x 100 mL	D13136	✓
			5 x 50 mL	D13137	✓
			5 x 25 mL	D13138	✓
			5 x 10 mL	D13139	✓
Cholinesterase	opt. DGKC	2 reagents	5 x 100 mL	D07720	✓
			5 x 50 mL	D07730	✓
			5 x 25 mL	D07740	✓
			5 x 10 mL	D07750	✓

Multi Purpose Kits



	Method	Configuration	Kit Size	REF	CE
CK-MB	opt. DGKC / IFCC	2 reagents	5 x 100 mL	D10585	✓
			5 x 50 mL	D10586	✓
			5 x 25 mL	D10587	✓
			5 x 10 mL	D10588	✓
CK-NAC	opt. DGKC / IFCC	2 reagents	5 x 100 mL	D00591	✓
			5 x 50 mL	D94581	✓
			5 x 25 mL	D00592	✓
			5 x 10 mL	D98579	✓
Copper	3,5-DiBr-PAESA	Single reagent	5 x 25 mL	507140	✓
Creatinine	Enzymatic, PAP	2 reagents	4 x 100 mL	D06420	✓
			4 x 50 mL	D06430	✓
			4 x 25 mL	D06440	✓
			4 x 10 mL	D06450	✓
Creatinine	mod. Jaffe	2 reagents	5 x 100 mL	D95595	✓
			5 x 50 mL	D00616	✓
			5 x 25 mL	D00617	✓
			5 x 10 mL	D00618	✓
Fructosamine	NBT	2 reagents	4 x 20 mL	310144	✓
			2 x 20 mL	310140	✓
G6PDH	UV, kinetic	2 reagents*	10 x 18 mL	Y04500	✓
gamma-GT	Szasz, stand. to IFCC	2 reagents	5 x 100 mL	D00628	✓
			5 x 50 mL	D95604	✓
			5 x 25 mL	D00629	✓
			5 x 10 mL	D98631	✓
GLDH	DGKC	2 reagents	5 x 100 mL	D03774	✓
			5 x 50 mL	D03773	✓
			5 x 25 mL	D03775	✓
			5 x 10 mL	D03776	✓
Glucose	GOD-PAP	Single reagent	4 x 250 mL	D08220	✓
			5 x 100 mL	D00221	✓
			5 x 50 mL	D98221	✓
			5 x 25 mL	D00223	✓
			5 x 10 mL	D00224	✓
Glucose	Hexokinase	2 reagents	5 x 100 mL	D96226	✓
			5 x 50 mL	D96227	✓
			5 x 25 mL	D00632	✓
			5 x 10 mL	D00637	✓

*powder

Multi Purpose Kits



	Method	Configuration	Kit Size	REF	CE
GOT (AST)	mod. IFCC	2 reagents	5 x 100 mL	D94610	✓
			5 x 50 mL	D98616	✓
			5 x 25 mL	D00678	✓
			5 x 10 mL	D98617	✓
GPT (ALT)	mod. IFCC	2 reagents	5 x 100 mL	D94620	✓
			5 x 50 mL	D98624	✓
			5 x 25 mL	D00640	✓
			5 x 10 mL	D98625	✓
Homocysteine	Enzymatic cycling	2 reagents	4 x 20 mL	908510	✓
			4 x 10 mL	908520	✓
beta-Hydroxybutyrate	Enzymatic, UV	2 reagents	5 x 25 mL	D18027	✓
			5 x 10 mL	D18028	✓
Iron	Ferene	2 reagents	5 x 100 mL	D01103	✓
			5 x 50 mL	D01104	✓
			5 x 25 mL	D01105	✓
			5 x 10 mL	D01106	✓
Lactate	Enzymatic, UV	2 reagents	5 x 50 mL	D08130	✓
			5 x 25 mL	D08140	✓
			5 x 10 mL	D14150	✓
LDH-L	IFCC	2 reagents	5 x 100 mL	D00662	✓
			5 x 50 mL	D00663	✓
			5 x 25 mL	D00664	✓
			5 x 10 mL	D00665	✓
LDH-P	opt. DGKC	2 reagents	5 x 100 mL	D00656	✓
			5 x 50 mL	D94651	✓
			5 x 25 mL	D00657	✓
			5 x 10 mL	D00658	✓
Lipase	Enzymatic, colorimetric	2 reagents	5 x 50 mL	D01441	✓
			5 x 25 mL	D01440	✓
			5 x 10 mL	D01443	✓
Lithium	Enzymatic	2 reagents	3 x 20 mL	910210	✓
Magnesium	Xylidyl blue	Single reagent	5 x 100 mL	D01243	✓
			5 x 50 mL	D01245	✓
			5 x 25 mL	D01256	✓
			5 x 10 mL	D01246	✓
NEFA	ACOD-PAP	2 reagents	5 x 25 mL	D07940	✓
			5 x 10 mL	D07950	✓

Multi Purpose Kits



	Method	Configuration	Kit Size	REF	CE
Phosphorus Inorganic	Molybdate	Single reagent	5 x 100 mL	D00361	✓
			5 x 50 mL	D00362	✓
			5 x 25 mL	D00363	✓
			5 x 10 mL	D00364	✓
Potassium	Enzymatic	2 reagents	5 x 100 mL	914105	✓
			5 x 50 mL	914106	✓
			5 x 25 mL	914107	✓
			5 x 10 mL	910110	✓
Protein Total	Biuret	2 reagents	5 x 100 mL	D95680	✓
			5 x 50 mL	D00685	✓
			5 x 25 mL	D00686	✓
			5 x 10 mL	D00687	✓
Protein Total Mono	Biuret	Single reagent	5 x 100 mL	D12680	✓
			5 x 50 mL	D13685	✓
			5 x 25 mL	D13686	✓
			5 x 10 mL	D13687	✓
Protein Total in Urine/CSF	Pyrogallol red	Single reagent	5 x 25 mL	D03200	✓
Sodium	Enzymatic	2 reagents	5 x 100 mL	914605	✓
			6 x 25 mL	914607	✓
			3 x 20 mL	909610	✓
Triglycerides	GPO-PAP	Single reagent	4 x 250 mL	D08388	✓
			5 x 100 mL	D00389	✓
			5 x 50 mL	D96388	✓
			5 x 25 mL	D00390	✓
			5 x 10 mL	D98390	✓
UIBC	Ferene	2 reagents	5 x 100 mL	D07320	✓
			5 x 50 mL	D07330	✓
			5 x 25 mL	D07340	✓
			5 x 10 mL	D07350	✓
Urea	Urease/colorimetric	3 reagents urea standard	5 x 100 mL	402999	✓
			6 x 25 mL	413925	✓
Urea UV Auto	Urease/GLDH	2 reagents	5 x 100 mL	D95704	✓
			5 x 50 mL	D98707	✓
			5 x 25 mL	D00715	✓
			5 x 10 mL	D00716	✓
Uric Acid AOX	Enzymatic, colorimetric	2 reagents	5 x 100 mL	D94710	✓
			5 x 50 mL	D98714	✓
			5 x 25 mL	D00719	✓
			5 x 10 mL	D00720	✓
Uric Acid TBHBA	Enzymatic, colorimetric	2 reagents	5 x 100 mL	D95459	✓
			5 x 50 mL	D98461	✓
			5 x 25 mL	D00463	✓
			5 x 10 mL	D00464	✓
Zinc	5-Br-PAPS	Single reagent	5 x 25 mL	507240	✓

Systems Packs for Autolyser & Autolyser 450



	Method	Configuration	Kit Size	REF	CE
Albumin	BCG	Single reagent	5 x 50 mL	DA0801	✓
Alkaline Phosphatase	mod. IFCC	2 reagents	5 x 50 mL	DA0803	✓
Ammonia	Enzymatic, UV	Single reagent	5 x 20 mL	NA0804	✓
alpha-Amylase	CNP-G3	Single reagent	5 x 20 mL	3A0805	✓
alpha-Amylase	mod. IFCC	2 reagents	5 x 20 mL	DA0806	✓
alpha-Amylase Pancreatic	ET-G7PNP	2 reagents	5 x 20 mL	DA0807	✓
Bile Acids	Enzymatic cycling	2 reagents	4 x 20 mL	9A0808	✓
Bilirubin Auto Direct	DCA	2 reagents	5 x 50 mL	DA0809	✓
Bilirubin Auto Total	DCA	2 reagents	5 x 50 mL	DA0810	✓
Calcium	Arsenazo	Single reagent	5 x 50 mL	DA0811	✓
Calcium	CPC	2 reagents	5 x 50 mL	DA0812	✓
Carbon Dioxide (CO ₂)	PEP-C	Single reagent	5 x 20 mL	NA0820	✓
Chloride	Mercuric thiocyanate	Single reagent	5 x 50 mL	DA0813	✓
Cholesterol	CHOD-PAP	Single reagent	5 x 50 mL	DA0814	✓
Cholesterol HDL Direct	Enzymatic	2 reagents	5 x 50 mL	FA2115	✓
Cholesterol LDL Direct	Enzymatic	2 reagents	5 x 20 mL	FA2116	✓
Cholinesterase	opt. DGKC	2 reagents	5 x 50 mL	DA0817	✓
CK-MB	opt. DGKC / IFCC	2 reagents	5 x 20 mL	DA1018	✓
CK-NAC	opt. DGKC / IFCC	2 reagents	5 x 50 mL	DA0819	✓
Copper	3,5-DiBr-PAESA	Single reagent	5 x 20 mL	5A0821	✓
Creatinine	Enzymatic, PAP	2 reagents	5 x 50 mL	DA0822	✓
Creatinine	mod. Jaffe	2 reagents	5 x 50 mL	DA0823	✓
gamma-GT	Szasz, stand. to IFCC	2 reagents	5 x 50 mL	DA0825	✓
GLDH	DGKC	2 reagents	5 x 20 mL	DA0826	✓
Glucose	GOD-PAP	Single reagent	5 x 50 mL	DA0827	✓
Glucose	Hexokinase	2 reagents	5 x 50 mL	DA0828	✓
GOT (AST)	mod. IFCC	2 reagents	5 x 50 mL	DA0829	✓
GPT (ALT)	mod. IFCC	2 reagents	5 x 50 mL	DA0830	✓
Homocysteine	Enzymatic cycling	2 reagents	4 x 20 mL	9A0849	✓
beta-Hydroxybutyrate	Enzymatic, UV	2 reagents	5 x 20 mL	DA1832	✓
Iron	Ferene	2 reagents	5 x 50 mL	DA0833	✓

Systems Packs for Autolyser & Autolyser 450



	Method	Configuration	Kit Size	REF	CE
Lactate	Enzymatic, UV	2 reagents	5 x 20 mL	DA0834	✓
LDH-L	IFCC	2 reagents	5 x 50 mL	DA0835	✓
LDH-P	opt. DGKC	2 reagents	5 x 50 mL	DA0836	✓
Lipase	Enzymatic, colorimetric	2 reagents	5 x 20 mL	DA0837	✓
Lithium	Enzymatic	2 reagents	3 x 20 mL	9A0850	✓
Magnesium	Xylidyl blue	Single reagent	5 x 50 mL	DA0838	✓
NEFA	ACOD-PAP	2 reagents	5 x 20 mL	DA0839	✓
Phosphorus Inorganic	Molybdate	Single reagent	5 x 50 mL	DA0840	✓
Potassium	Enzymatic	2 reagents	5 x 20 mL	9A0851	✓
Protein Total	Biuret	2 reagents	5 x 50 mL	DA0841	✓
Protein Total Mono	Biuret	Single reagent	5 x 50 mL	DA1353	✓
Sodium	Enzymatic	2 reagents	3 x 20 mL	9A0852	✓
Triglycerides	GPO-PAP	Single reagent	5 x 50 mL	DA0843	✓
UIBC	Ferene	2 reagents	5 x 50 mL	DA0844	✓
Urea UV Auto	Urease/GLDH	2 reagents	5 x 50 mL	DA0845	✓
Uric Acid AOX	Enzymatic, colorimetric	2 reagents	5 x 50 mL	DA0846	✓
Uric Acid TBHBA	Enzymatic, colorimetric	2 reagents	5 x 50 mL	DA0847	✓
Zinc	5-Br-PAPS	Single reagent	5 x 20 mL	5A0848	✓



Systems Packs for BT Series



	Method	Configuration	Kit Size	REF	CE
Albumin	BCG	Single reagent	4 x 50 mL	DT1001	✓
Alkaline Phosphatase	mod. IFCC	2 reagents	4 x 62.5 mL	DT1003	✓
Ammonia	Enzymatic, UV	Single reagent	5 x 20 mL	NT1004	✓
alpha-Amylase	CNP-G3	Single reagent	5 x 20 mL	3T1005	✓
alpha-Amylase	mod. IFCC	2 reagents	5 x 20 mL	DT1006	✓
alpha-Amylase Pancreatic	ET-G7PNP	2 reagents	5 x 20 mL	DT1007	✓
Bile Acids	Enzymatic cycling	2 reagents	4 x 20 mL	9T1008	✓
Bilirubin Auto Direct	DCA	2 reagents	4 x 62.5 mL	DT1009	✓
Bilirubin Auto Total	DCA	2 reagents	4 x 62.5 mL	DT1010	✓
Calcium	Arsenazo	Single reagent	4 x 50 mL	DT1011	✓
Calcium	CPC	2 reagents	4 x 62.5 mL	DT1012	✓
Carbon Dioxide (CO ₂)	PEP-C	Single reagent	5 x 20 mL	NT1020	✓
Chloride	Mercuric thiocyanate	Single reagent	4 x 50 mL	DT1013	✓
Cholesterol	CHOD-PAP	Single reagent	4 x 50 mL	DT1014	✓
Cholesterol HDL Direct	Enzymatic	2 reagents	4 x 62.5 mL	FT2115	✓
Cholesterol LDL Direct	Enzymatic	2 reagents	5 x 20 mL	FT2116	✓
Cholinesterase	opt. DGKC	2 reagents	4 x 62.5 mL	DT1017	✓
CK-MB	opt. DGKC / IFCC	2 reagents	5 x 20 mL	DT1018	✓
CK-NAC	opt. DGKC / IFCC	2 reagents	4 x 62.5 mL	DT1019	✓
Copper	3,5-DiBr-PAESA	Single reagent	5 x 20 mL	5T1021	✓
Creatinine	Enzymatic, PAP	2 reagents	4 x 50 mL	DT1022	✓
Creatinine	mod. Jaffe	2 reagents	4 x 62.5 mL	DT1023	✓
gamma-GT	Szasz, stand. to IFCC	2 reagents	4 x 62.5 mL	DT1025	✓
GLDH	DGKC	2 reagents	5 x 20 mL	DT1026	✓
Glucose	GOD-PAP	Single reagent	4 x 50 mL	DT1027	✓
Glucose	Hexokinase	2 reagents	4 x 62.5 mL	DT1028	✓
GOT (AST)	mod. IFCC	2 reagents	4 x 62.5 mL	DT1029	✓
GPT (ALT)	mod. IFCC	2 reagents	4 x 62.5 mL	DT1030	✓
Homocysteine	Enzymatic cycling	2 reagents	4 x 20 mL	9T1049	✓
beta-Hydroxybutyrate	Enzymatic, UV	2 reagents	5 x 20 mL	DT1832	✓
Iron	Ferene	2 reagents	4 x 62.5 mL	DT1033	✓

Systems Packs for BT Series



	Method	Configuration	Kit Size	REF	CE
Lactate	Enzymatic, UV	2 reagents	5 x 20 mL	DT1034	✓
LDH-L	IFCC	2 reagents	4 x 62.5 mL	DT1035	✓
LDH-P	opt. DGKC	2 reagents	4 x 62.5 mL	DT1036	✓
Lipase	Enzymatic, colorimetric	2 reagents	5 x 20 mL	DT1037	✓
Lithium	Enzymatic	2 reagents	3 x 20 mL	9T1050	✓
Magnesium	Xylidyl blue	Single reagent	4 x 50 mL	DT1038	✓
NEFA	ACOD-PAP	2 reagents	5 x 20 mL	DT1039	✓
Phosphorus Inorganic	Molybdate	Single reagent	4 x 50 mL	DT1040	✓
Potassium	Enzymatic	2 reagents	5 x 20 mL	9T1051	✓
Protein Total	Biuret	2 reagents	4 x 62.5 mL	DT1041	✓
Protein Total Mono	Biuret	Single reagent	4 x 50 mL	DT1353	✓
Protein Total in Urine/CSF	Pyrogallol red	Single reagent	5 x 20 mL	DT1042	✓
Sodium	Enzymatic	2 reagents	3 x 20 mL	9T1052	✓
Triglycerides	GPO-PAP	Single reagent	4 x 50 mL	DT1043	✓
UIBC	Ferene	2 reagents	4 x 62.5 mL	DT1044	✓
Urea UV Auto	Urease/GLDH	2 reagents	4 x 62.5 mL	DT1045	✓
Uric Acid AOX	Enzymatic, colorimetric	2 reagents	4 x 62.5 mL	DT1046	✓
Uric Acid TBHBA	Enzymatic, colorimetric	2 reagents	4 x 62.5 mL	DT1047	✓
Zinc	5-Br-PAPS	Single reagent	5 x 20 mL	5T1048	✓



Systems Packs for Hitachi 902 / 911 / 912



	Method	Configuration	Kit Size	REF	CE
Albumin	BCG	Single reagent	10 x 50 mL	D51911	✓
Alkaline Phosphatase	mod. IFCC	2 reagents	10 x 50 mL	D52911	✓
Ammonia	Enzymatic, UV	Single reagent	1 x 50 mL	N49911	✓
alpha-Amylase	CNP-G3	Single reagent	10 x 50 mL	355911	✓
alpha-Amylase	mod. IFCC	2 reagents	5 x 50 mL	D54911	✓
alpha-Amylase Pancreatic	ET-G7PNP	2 reagents	5 x 50 mL	D56911	✓
Bile Acids	Enzymatic cycling	2 reagents	5 x 50 mL	950911	✓
Bilirubin Auto Direct	DCA	2 reagents	10 x 50 mL	D58911	✓
Bilirubin Auto Total	DCA	2 reagents	10 x 50 mL	D57911	✓
Calcium	Arsenazo	Single reagent	10 x 50 mL	D59911	✓
Calcium	CPC	2 reagents	10 x 50 mL	D60911	✓
Carbon Dioxide (CO ₂)	PEP-C	Single reagent	5 x 50 mL	N88911	✓
Chloride	Mercuric Thiocyanate	Single reagent	10 x 50 mL	D61911	✓
Cholesterol	CHOD-PAP	Single reagent	10 x 50 mL	D62911	✓
Cholesterol HDL Direct	Enzymatic	2 reagents	5 x 50 mL	F21911	✓
Cholesterol LDL Direct	Enzymatic	2 reagents	5 x 50 mL 1 x 50 mL	F210911 F211911	✓ ✓
Cholinesterase	opt. DGKC	2 reagents	5 x 50 mL	D63911	✓
CK-MB	opt. DGKC / IFCC	2 reagents	5 x 50 mL	D35911	✓
CK-NAC	opt. DGKC / IFCC	2 reagents	5 x 50 mL	D64911	✓
Copper	3,5-DiBr-PAESA	Single reagent	5 x 50 mL	545911	✓
Creatinine	Enzymatic, PAP	2 reagents	4 x 50 mL	D69911	✓
Creatinine	mod. Jaffe	2 reagents	10 x 50 mL	D66911	✓
gamma-GT	Szasz, stand. to IFCC	2 reagents	5 x 50 mL	D68911	✓
GLDH	DGKC	2 reagents	5 x 50 mL	D03911	✓
Glucose	GOD-PAP	Single reagent	10 x 50 mL	D70911	✓
Glucose	Hexokinase	2 reagents	5 x 50 mL	D71911	✓
GOT (AST)	mod. IFCC	2 reagents	10 x 50 mL	D72911	✓
GPT (ALT)	mod. IFCC	2 reagents	10 x 50 mL	D73911	✓
Homocysteine	Enzymatic cycling	2 reagents	1 x 39 mL	992911	✓
beta-Hydroxybutyrate	Enzymatic, UV	2 reagents	1 x 50 mL	D42911	✓

Systems Packs for Hitachi 902 / 911 / 912



	Method	Configuration	Kit Size	REF	CE
Iron	Ferene	2 reagents	10 x 50 mL	D91911	✓
Lactate	Enzymatic, UV	2 reagents	5 x 50 mL	D75911	✓
LDH-L	IFCC	2 reagents	5 x 50 mL	D89911	✓
LDH-P	opt. DGKC	2 reagents	5 x 50 mL	D76911	✓
Lipase	Enzymatic, colorimetric	2 reagents	5 x 50 mL	D44911	✓
Lithium	Enzymatic	2 reagents	1 x 60 mL	947911	✓
Magnesium	Xylidyl blue	Single reagent	10 x 50 mL	D78911	✓
NEFA	ACOD-PAP	2 reagents	1 x 50 mL	D77911	✓
Phosphorus Inorganic	Molybdate	Single reagent	10 x 50 mL	D85911	✓
Potassium	Enzymatic	2 reagents	1 x 50 mL	948911	✓
Protein Total	Biuret	2 reagents	10 x 50 mL	D80911	✓
Protein Total Mono	Biuret	Single reagent	10 x 50 mL	D43911	✓
Protein Total in Urine/CSF	Pyrogallol red	Single reagent	5 x 50 mL	D79911	✓
Sodium	Enzymatic	2 reagents	1 x 60 mL	990911	✓
Triglycerides	GPO-PAP	Single reagent	10 x 50 mL	D81911	✓
UIBC	Ferene	2 reagents	5 x 50 mL	D86911	✓
Urea UV Auto	Urease/GLDH	2 reagents	10 x 50 mL	D82911	✓
Uric Acid AOX	Enzymatic, colorimetric	2 reagents	10 x 50 mL	D84911	✓
Uric Acid TBHBA	Enzymatic, colorimetric	2 reagents	10 x 50 mL	D83911	✓
Zinc	5-Br-PAPS	Single reagent	5 x 50 mL	587911	✓



Systems Packs for Advia 1650 & Modular P



	Method	Configuration	Kit Size	REF	CE
Albumin	BCG	Single reagent	9 x 65 mL	D0401917	✓
Alkaline Phosphatase	mod. IFCC	2 reagents	5 x 62.5 mL	D0402917	✓
alpha-Amylase	CNP-G3	Single reagent	9 x 65 mL	D0405917	✓
alpha-Amylase	mod. IFCC	2 reagents	5 x 62.5 mL	D0406917	✓
alpha-Amylase Pancreatic	ET-G7PNP	2 reagents	5 x 50 mL	D0404917	✓
Bile Acids	Enzymatic cycling	2 reagents	4 x 60 mL	90410917	✓
Bilirubin Auto Direct	DCA	2 reagents	5 x 62.5 mL	D0408917	✓
Bilirubin Auto Total	DCA	2 reagents	5 x 62.5 mL	D0409917	✓
Calcium	Arsenazo	Single reagent	9 x 65 mL	D0412917	✓
Calcium	CPC	2 reagents	5 x 62.5 mL	D0413917	✓
Carbon Dioxide (CO ₂)	PEP-C	Single reagent	9 x 65 mL	N0414917	✓
Chloride	Mercuric thiocyanate	Single reagent	9 x 65 mL	D0415917	✓
Cholesterol	CHOD-PAP	Single reagent	9 x 65 mL	D0418917	✓
Cholesterol HDL Direct	Enzymatic	2 reagents	5 x 62.5 mL	F2116917	✓
Cholesterol LDL Direct	Enzymatic	2 reagents	5 x 62.5 mL 5 x 20 mL	F2143917 F2117917	✓ ✓
Cholinesterase	opt. DGKC	2 reagents	5 x 62.5 mL	D0419917	✓
CK-MB	opt. DGKC / IFCC	2 reagents	5 x 62.5 mL	D0450917	✓
CK-NAC	opt. DGKC / IFCC	2 reagents	5 x 62.5 mL	D0421917	✓
Copper	3,5-DiBr-PAESA	Single reagent	5 x 50 mL	50447917	✓
Creatinine	Enzymatic, PAP	2 reagents	4 x 50 mL	D0411917	✓
Creatinine	mod. Jaffe	2 reagents	5 x 62.5 mL	D0422917	✓
gamma-GT	Szasz, stand. to IFCC	2 reagents	5 x 62.5 mL	D0423917	✓
GLDH	DGKC	2 reagents	5 x 50 mL	D0424917	✓
Glucose	GOD-PAP	Single reagent	9 x 65 mL	D0425917	✓
Glucose	Hexokinase	2 reagents	5 x 62.5 mL	D0426917	✓
GOT (AST)	mod. IFCC	2 reagents	5 x 62.5 mL	D0427917	✓
GPT (ALT)	mod. IFCC	2 reagents	5 x 62.5 mL	D0428917	✓

Systems Packs for Advia 1650 & Modular P



	Method	Configuration	Kit Size	REF	CE
Iron	Ferene	2 reagents	5 x 62.5 mL	D0430917	✓
Lactate	Enzymatic, UV	2 reagents	5 x 50 mL	D0445917	✓
LDH-L	IFCC	2 reagents	5 x 62.5 mL	D0431917	✓
LDH-P	opt. DGKC	2 reagents	5 x 62.5 mL	D0432917	✓
Lipase	Enzymatic, colorimetric	2 reagents	5 x 50 mL	D0433917	✓
Magnesium	Xylidyl blue	Single reagent	9 x 65 mL	D0434917	✓
NEFA	ACOD-PAP	2 reagents	5 x 50 mL	D0443917	✓
Phosphorus Inorganic	Molybdate	Single reagent	9 x 65 mL	D0435917	✓
Protein Total	Biuret	2 reagents	5 x 62.5 mL	D0437917	✓
Protein Total Mono	Biuret	Single reagent	9 x 65 mL	D0448917	✓
Protein Total in Urine/CSF	Pyrogallol red	Single reagent	9 x 65 mL	D0436917	✓
Triglycerides	GPO-PAP	Single reagent	9 x 65 mL	D0438917	✓
UIBC	Ferene	2 reagents	5 x 62.5 mL	D0444917	✓
Urea UV Auto	Urease/GLDH	2 reagents	5 x 62.5 mL	D0439917	✓
Uric Acid AOX	Enzymatic, colorimetric	2 reagents	5 x 62.5 mL	D0440917	✓
Uric Acid TBHBA	Enzymatic, colorimetric	2 reagents	5 x 62.5 mL	D0441917	✓
Zinc	5-Br-PAPS	Single reagent	5 x 50 mL	50446917	✓



Systems Packs for Erba XL



	Method	Configuration	Kit Size	REF	CE
Albumin	BCG	Single reagent	10 x 50 mL	DE1801	✓
Alkaline Phosphatase	mod. IFCC	2 reagents	2 x 62.5 mL	DE1803	✓
Ammonia	Enzymatic, UV	Single reagent	5 x 20 mL	NE1804	✓
alpha-Amylase	CNP-G3	Single reagent	5 x 20 mL	3E1805	✓
alpha-Amylase	mod. IFCC	2 reagents	2 x 62.5 mL	DE1806	✓
alpha-Amylase Pancreatic	ET-G7PNP	2 reagents	1 x 62.5 mL	DE1807	✓
Bile Acids	Enzymatic cycling	2 reagents	2 x 50 mL	9E1808	✓
Bilirubin Auto Direct	DCA	2 reagents	4 x 62.5 mL	DE1809	✓
Bilirubin Auto Total	DCA	2 reagents	4 x 62.5 mL	DE1810	✓
Calcium	Arsenazo	Single reagent	5 x 20 mL	DE1811	✓
Calcium	CPC	2 reagents	2 x 62,5 mL	DE1812	✓
Carbon Dioxide (CO2)	PEP-C	Single reagent	5 x 20 mL	NE1820	✓
Chloride	Mercuric thiocyanate	Single reagent	5 x 20 mL	DE1813	✓
Cholesterol	CHOD-PAP	Single reagent	10 x 50 mL	DE1814	✓
Cholesterol HDL Direct	Enzymatic	2 reagents	4 x 62.5 mL	FE2115	✓
Cholesterol LDL Direct	Enzymatic	2 reagents	2 x 62.5 mL	FE2116	✓
Cholinesterase	opt. DGKC	2 reagents	2 x 62.5 mL	DE1817	✓
CK-MB	opt. DGKC / IFCC	2 reagents	2 x 62.5 mL	DE1818	✓
CK-NAC	opt. DGKC / IFCC	2 reagents	2 x 62.5 mL	DE1819	✓
Copper	3,5-DiBr-PAESA	Single reagent	5 x 20 mL	5E1821	✓
Creatinine	Enzymatic, PAP	2 reagents	4 x 50 mL	DE1822	✓
Creatinine	mod. Jaffe	2 reagents	4 x 62.5 mL	DE1823	✓
gamma-GT	Szasz, stand. to IFCC	2 reagents	2 x 62.5 mL	DE1825	✓
GLDH	DGKC	2 reagents	1 x 62.5 mL	DR1826	✓
Glucose	GOD-PAP	Single reagent	10 x 50 mL	DE1827	✓
Glucose	Hexokinase	2 reagents	8 x 62.5 mL	DE1828	✓
GOT (AST)	mod. IFCC	2 reagents	4 x 62.5 mL	DE1829	✓
GPT (ALT)	mod. IFCC	2 reagents	4 x 62.5 mL	DE1830	✓

Systems Packs for Erba XL



	Method	Configuration	Kit Size	REF	CE
Homocysteine	Enzymatic cycling	2 reagents	2 x 39 mL	9E1849	✓
beta-Hydroxybutyrate	Enzymatic, UV	2 reagents	1 x 62.5 mL	DE1832	✓
Iron	Ferene	2 reagents	2 x 62.5 mL	DE1833	✓
Lactate	Enzymatic, UV	2 reagents	2 x 62.5 mL	DE1834	✓
LDH-L	IFCC	2 reagents	2 x 62.5 mL	DE1835	✓
LDH-P	opt. DGKC	2 reagents	2 x 62.5 mL	DE1836	✓
Lipase	Enzymatic, colorimetric	2 reagents	2 x 62.5 mL	DE1837	✓
Lithium	Enzymatic	2 reagents	1 x 60 mL	9E1850	✓
Magnesium	Xylidyl blue	Single reagent	5 x 20 mL	DE1838	✓
NEFA	ACOD-PAP	2 reagents	1 x 62.5 mL	DE1839	✓
Phosphorus Inorganic	Molybdate	Single reagent	5 x 20 mL	DE1840	✓
Potassium	Enzymatic	2 reagents	2 x 62.5 mL	9E1851	✓
Protein Total	Biuret	2 reagents	8 x 62.5 mL	DE1841	✓
Protein Total Mono	Biuret	Single reagent	10 x 50 mL	DE1853	✓
Protein Total in Urine/CSF	Pyrogallol red	Single reagent	5 x 20 mL	DE1842	✓
Sodium	Enzymatic	2 reagents	2 x 60 mL	9E1852	✓
Triglycerides	GPO-PAP	Single reagent	10 x 50 mL	DE1843	✓
UIBC	Ferene	2 reagents	2 x 62.5 mL	DE1844	✓
Urea UV Auto	Urease/GLDH	2 reagents	4 x 62.5 mL	DE1845	✓
Uric Acid AOX	Enzymatic, colorimetric	2 reagents	8 x 62.5 mL	DE1846	✓
Uric Acid TBHBA	Enzymatic, colorimetric	2 reagents	8 x 62.5 mL	DE1847	✓
Zinc	5-Br-PAPS	Single reagent	5 x 20 mL	5E1848	✓

Systems Packs for Biolyzer 300 / 600



	Method	Configuration	Kit Size	REF	CE
Albumin	BCG	Single reagent	10 x 50 mL	DB20301	✓
Alkaline Phosphatase	mod. IFCC	2 reagents	4 x 62.5 mL	DB20302	✓
alpha-Amylase	mod. IFCC	2 reagents	4 x 62.5 mL	DB20304	✓
alpha-Amylase Pancreatic	ET-G7PNP	2 reagents	2 x 62.5 mL	DB20303	✓
Bilirubin Auto Direct	DCA	2 reagents	4 x 62.5 mL	DB20306	✓
Bilirubin Auto Total	DCA	2 reagents	4 x 62.5 mL	DB20307	✓
Calcium	Arsenazo	Single Reagent	10 x 50 mL	DB20308	✓
Calcium	CPC	2 reagents	4 x 62.5 mL	DB20309	✓
Cholesterol	CHOD-PAP	Single Reagent	10 x 50 mL	DB20312	✓
Cholesterol HDL Direct	Enzymatic	2 reagents	4 x 62.5 mL	FB21310	✓
Cholesterol LDL Direct	Enzymatic	2 reagents	4 x 62.5 mL	FB21311	✓
Cholinesterase	opt. DGKC	2 reagents	4 x 62.5 mL	DB20313	✓
CK-MB	opt. DGKC / IFCC	2 reagents	4 x 62.5 mL	DB20314	✓
CK-NAC	opt. DGKC / IFCC	2 reagents	4 x 62.5 mL	DB20315	✓
Creatinine	Enzymatic, PAP	2 reagents	4 x 50 mL	DB20316	✓
Creatinine	mod. Jaffe	2 reagents	4 x 62.5 mL	DB20317	✓
gamma-GT	Szasz, stand. to IFCC	2 reagents	4 x 62.5 mL	DB20318	✓
GLDH	DGKC	2 reagents	2 x 62.5 mL	DB20319	✓
Glucose	GOD-PAP	Single reagent	10 x 50 mL	DB20320	✓
Glucose	Hexokinase	2 reagents	4 x 62.5 mL	DB20321	✓
GOT (AST)	mod. IFCC	2 reagents	4 x 62.5 mL	DB20322	✓
GPT (ALT)	mod. IFCC	2 reagents	4 x 62.5 mL	DB20323	✓
Iron	Ferene	2 reagents	4 x 62.5 mL	DB20324	✓
Lactate	Enzymatic, UV	2 reagents	2 x 62.5 mL	DB20325	✓
LDH-L	IFCC	2 reagents	4 x 62.5 mL	DB20326	✓
Lipase	Enzymatic, colorimetric	2 reagents	4 x 62.5 mL	DB20327	✓
Magnesium	Xylidyl blue	Single reagent	10 x 50 mL	DB20328	✓
Phosphorus Inorganic	Molybdate	Single reagent	10 x 50 mL	DB20329	✓
Protein Total	Biuret	2 reagents	4 x 62.5 mL	DB20331	✓
Protein Total in Urine/CSF	Pyrogallol red	Single reagent	10 x 50 mL	DB20330	✓
Triglycerides	GPO-PAP	Single reagent	10 x 50 mL	DB20332	✓
Urea UV Auto	Urease/GLDH	2 reagents	4 x 62.5 mL	DB20333	✓
Uric Acid AOX	Enzymatic, colorimetric	2 reagents	4 x 62.5 mL	DB20334	✓

Auxiliary Reagents and Additives



	Intended Use	Size	REF	CE
G-Reagent*	for G6PDH, UV, kinetic	1 x 60 mL	Y04550LV	
Pyridoxal-5'-Phosphate	for GOT (AST) and GPT (ALT)	1 x 4 mL	D96361	✓

* general laboratory equipment

Standards

	Concentration	Size	REF	CE
Albumin	5 g/dL	1 x 3 mL	D95555	✓
Ammonia	approx. 250 µmol/L	1 x 5 mL	Y08310SV	✓
Bile Acids	50 µmol/L	1 x 3 mL	903210	✓
Calcium	10 mg/dL	1 x 3 mL	D95094	✓
Chloride	100 mmol/L	1 x 3 mL	D95108	✓
Cholesterol	200 mg/dL	1 x 3 mL	D95114	✓
CO ₂	30 mmol/L	1 x 3 mL	D06520SV	✓
Copper	100 µg/dL	1 x 3 mL	507163SV	✓
Creatinine	2 mg/dL	1 x 3 mL	D94592	✓
Glucose	100 mg/dL	1 x 3 mL	D95223	✓
beta-Hydroxybutyrate	1 mmol/L	1 x 3 mL	D10090SV	✓
Iron	100 µg/dL	1 x 3 mL	D95305	✓
Lithium	3 level set	3 x 3 mL	910280	✓
Magnesium	2 mg/dL	1 x 3 mL	D95339	✓
NEFA	1 mmol/L	1 x 3 mL	D07963SV	✓
Phosphorus	5 mg/dL	1 x 3 mL	D95362	✓
Potassium	2 level set	2 x 3 mL	910180	✓
Protein Total	5 g/dL	1 x 3 mL	D94683	✓
Protein Total in Urine/CSF	Urine: 1300 mg/L, CSF: 1100 mg/L	1 x 3 mL	D03600	✓
Sodium	2 level set	2 x 3 mL	909680	✓
Triglycerides	200 mg/dL	1 x 3 mL	D95380	✓
Urea	50 mg/dL	1 x 3 mL	D95706	✓
Uric Acid	6 mg/dL	1 x 3 mL	D94708	✓
Zinc	200 µg/dL	1 x 3 mL	507263SV	✓

Calibrators



	Description	Size	REF	CE
Diacal Auto*	multi calibration serum	5 x 3 mL	D98485	✓
		1 x 3 mL	D98485SV	✓
Diacal Lipids*	lipid calibration plasma	1 x 2 mL	D13585SV	✓
Diacal CK-MB*	1 level	5 x 1 mL	D13595	✓
		1 x 1 mL	D13595SV	✓
ADA*	1 level	1 x 1 mL	913870SV	✓
G6PDH*	1 level	1 x 0.5 mL	Y17565SV	✓
Homocysteine	5 level set	5 x 1 mL	908550	✓

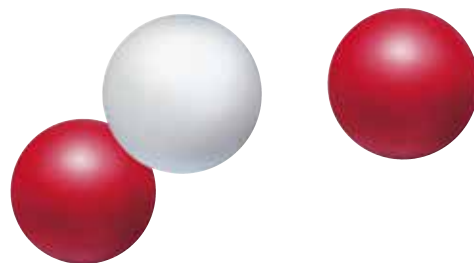
* lyophilised

Controls



	Description	Size	REF	CE
Diacon N*	multi control serum, normal	12 x 5 mL	D98481	✓
		5 x 5 mL	D14481	✓
		1 x 5 mL	D98481SV	✓
Diacon P*	multi control serum, abnormal	12 x 5 mL	D98482	✓
		5 x 5 mL	D14482	✓
		1 x 5 mL	D98482SV	✓
Diacon Lipids*	lipid control serum, normal	3 x 3 mL	D99486	✓
		1 x 3 mL	D99486SV	✓
Diacon Lipids High*	lipid control serum, abnormal	3 x 3 mL	D11487	✓
		1 x 3 mL	D11487SV	✓
Diacon Urine Level 1	multi control urine	12 x 5 mL	D08581	✓
		1 x 5 mL	D08581SV	✓
Diacon Urine Level 2	multi control urine	12 x 5 mL	D08582	✓
		1 x 5 mL	D08582SV	✓
ADA*	2 level set	2 x 1 mL	913880	✓
Ammonia	2 level set	2 x 5 mL	Y08330	✓
CO ₂	1 level	3 x 3 mL	D16525	✓
		1 x 3 mL	D16525SV	✓
G6PDH*	3 level set	6 x 0.5 mL	Y17560	✓
Homocysteine	4 level set	4 x 1 mL	905620	✓
Lithium*	2 level set	2 x 3 mL	910290	✓
Potassium*	2 level set	2 x 3 mL	910190	✓

* lyophilised



DIALAB®

Austria

DIALAB® GmbH

IZ NOE-Sued

Hondastrasse, Objekt M55

A-2351 Wiener Neudorf

Phone: +43-2236-66 09 10-0

Fax: +43-2236-66 09 10-30

E-mail: office@dialab.at

www.dialab.at